

Workshop timetable:


Friday 26 February

	WDYTVA? Theatre /SOG1	SOG2	SOG3	SOG REGIONAL	Ancestry.co.uk ACADEMY	DNA WORKSHOP	TheGenealogist Stand 825
10:00	10:00 SHOW OPENS						
10:30							
10:35							
10:40							
10:45							
10:50							
10:55							
11:00							
11:05							
11:10							
11:15							
11:20							
11:25							
11:30							
11:35							
11:40							
11:45							
11:50							
11:55							
12:00							
12:05							
12:10							
12:15							
12:20							
12:25							
12:30							
12:35							
12:40							
12:45							
12:50							
12:55							
13:00							
13:05							
13:10							
13:15							
13:20							
13:25							
13:30							
13:35							
13:40							
13:45							
13:50							
13:55							
14:00							
14:05							
14:10							
14:15							
14:20							
14:25							

	WDYTVA? Theatre /SOG1	SOG2	SOG3	SOG REGIONAL	Ancestry.co.uk ACADEMY	DNA WORKSHOP	TheGenealogist Stand 825
14:30							
14:35							
14:40							
14:45							
14:50							
14:55							
15:00							
15:05							
15:10							
15:15							
15:20							
15:25							
15:30							
15:35							
15:40							
15:45							
15:50							
15:55							
16:00							
16:05							
16:10							
16:15							
16:20							
16:25							
16:30							
16:35							
16:40							
16:45							
16:50							
16:55							
17:00							
17:05							
17:10							
17:15							
17:20							
17:25							
17:30							
17:35							
17:40							
17:45							
17:50							
17:55							
18:00							
18:05							
18:10							
18:15							
18:20							
18:25							
18:30	18:30 SHOW CLOSES						

TICKET = To gain entry to these free sessions, you must obtain an entrance ticket. These can be picked up free at the show, or a maximum of two per person can be purchased in advance for £2 each

Please note that no tickets are required for sessions in the Ancestry.co.uk Academy, the DNA Workshop or on TheGenealogist.co.uk stand.

 = The Who Do You Think You Are? Theatre, SOG Workshops, Ancestry.co.uk Academy and DNA Workshops will have an induction loop for the hearing-impaired

L While these sessions will prove useful whatever stage you are at in your research, they are also suitable for people who are new to genealogy and are presented in partnership with *Who Do You Think You Are? Magazine*



 These sessions on Irish Ancestry are supported by Tourism Ireland.



The Society of Genealogists Regional Workshop is supported by the Federation of Family History Societies.



Workshop timetable:


Saturday 27 February


	WDYT YA? Theatre /SOG1	SOG2	SOG3	SOG REGIONAL	Ancestry.co.uk ACADEMY	DNA WORKSHOP	TheGenealogist Stand 825
9:30	9:30 SHOW OPENS						
10:00		10:00-10:45 Alien Registration & Naturalisation with Roger Kershaw		10:00-10:45 Welsh family history with Geoff Riggs	10:00-11:00 The guide to using Ancestry.co.uk for beginners with Karen Reynolds and Charlene Chen	10:00-10:45 DNA for genealogy – basic concepts with Max Blankfeld	
10:05							
10:10							
10:15	10:15-11:00 Behind the scenes with WDYTYA? celebrity KATE HUMBLE		10:15-11:00 Looking after your family history with Denise Troughton				
10:20							
10:25							
10:30							
10:35							
10:40							
10:45							
10:50							
10:55							
11:00		11:00-11:45 Online resources for American research by Michael J Leclerc		11:00-11:45 Family history on the South Bank with Paul Blake		11:00-11:45 I've been DNA tested – now what? with Terry Barton	11:00-11:45 TheGenealogist.co.uk: Unique tools and data with Mark Bayley
11:05							
11:10							
11:15	11:15-12:00 Behind the scenes with WDYTYA? celebrity KATE HUMBLE		11:15-12:00 English, Welsh and Scottish church records on Familysearch with Sharon Hintze		11:20-12:20 The guide to using Ancestry.co.uk for intermediate users with Dan Jones and Gemma Woollard		
11:20							
11:25							
11:30							
11:35							
11:40							
11:45							
11:50							
11:55							
12:00		12:00-12:45 Using the Imperial War Museum and the United Kingdom with Sarah Paterson and Jane Furlong		12:00-12:45 Yorkshire family history with Roy Stockdill		12:00-12:45 New frontiers for DNA and genealogy with Bennett Greenspan	12:00-12:45 Roots Magic with Nigel Bayley
12:05							
12:10							
12:15	12:15-13:00 Why pay? The top free websites with John Hansen		12:15-13:00 Treasures of the SOG Library with Sue Gibbons				
12:20							
12:25							
12:30							
12:35							
12:40							
12:45							
12:50							
12:55							
13:00					12:35-13:35 The guide to using Ancestry.co.uk for advanced users with Nick Barratt and Karen Reynolds		
13:05							
13:10		13:00-13:45 Using the census records online with Peter Christian		13:00-13:45 Welsh Records at the Society of Genealogists with Else Churchill		13:00-13:45 The populating of the world according to DNA with Michael Hammer	13:00-13:45 "Ey up mi duck" A history of British accents and dialects with John Titford
13:15							
13:20							
13:25							
13:30	13:15-14:00 Stuck in London with Michael Gandy		13:15-14:00 How to find records of British policemen and police forces with Fred Feather				
13:35							
13:40							
13:45							
13:50							
13:55							

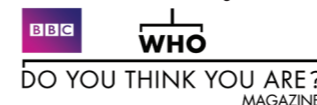
	WDYT YA? Theatre /SOG1	SOG2	SOG3	SOG REGIONAL	Ancestry.co.uk ACADEMY	DNA WORKSHOP	TheGenealogist Stand 825
14:00		14:00-14:45 Immigration records of the United States with D Joshua Taylor		14:00-14:45 Place of birth Ireland: how do I find out more? with Maggie Loughran			14:00-14:45 Combining traditional & genetic genealogy: lessons from leading surname projects with Chris Pomery
14:05							
14:10							
14:15	14:15-15:00 Tracing your Welsh family history with Nick Barratt		14:15-15:00 Looking at family pictures 1850-1940 with Jayne Shrimpton				14:00-14:45 Roots Magic with Nigel Bayley
14:20							
14:25							
14:30							
14:35							
14:40							
14:45							
14:50							
14:55							
15:00		15:00-15:45 Military family history online with Simon Fowler		15:00-15:45 Family history resources at the National Library of Wales with Beryl Evans			15:00-15:45 British DNA with Katherine Borges
15:05							
15:10							
15:15	15:15-16:00 Finding and using parish registers with Else Churchill		15:15-16:00 The National Archives apprenticeship records with Mark Pearsall		15:15-16:15 The guide to using Ancestry.co.uk for intermediate users with Dan Jones and Gemma Woollard		15:00-15:45 TheGenealogist.co.uk: Unique tools and data with Mark Bayley
15:20							
15:25							
15:30							
15:35							
15:40							
15:45							
15:50							
15:55							
16:00		16:00-16:45 Tracing a British merchant seaman with Chris Watts		16:00-16:45 Lost on the Web? A new directory of local history websites will Dr Gill Draper			16:00-16:45 National Geographic's DNA project – The Genographic Project with Max Blankfeld
16:05							
16:10							
16:15							
16:20							
16:25							
16:30	16:15-17:00 Smart genealogy with Geoff Swinfield		16:15-17:00 Kensal Green and the garden cemetery movement with Julian Litten				16:00-16:45 Barking up the wrong tree: a series of cautionary tales for family historians with John Titford
16:35							
16:40							
16:45							
16:50							
16:55							
17:00							
17:05		17:00-17:45 Land research in Scotland with Bruce Durie		17:00-17:45 Lancashire and North West Family History Resources with Peter Park			17:00-17:45 Twenty first century tools for the genealogist with Bennett Greenspan
17:10							
17:15							
17:20	17:10-17:55 Where did your ancestors live? with Else Churchill		17:10-17:55 Bring your family history to life with Rebecca De Saintonge				
17:25							
17:30							
17:35							
17:40							
17:45							
17:50							
17:55							
18:00	18:00 SHOW CLOSSES						

TICKET = To gain entry to these free sessions, you must obtain an entrance ticket. These can be picked up free at the show, or a maximum of two per person can be purchased in advance for £2 each

Please note that no tickets are required for sessions in the Ancestry.co.uk Academy, the DNA Workshop or on TheGenealogist.co.uk stand.

 = The Who Do You Think You Are? Theatre, SOG Workshops, Ancestry.co.uk Academy and DNA Workshops will have an induction loop for the hearing-impaired

 While these sessions will prove useful whatever stage you are at in your research, they are also suitable for people who are new to genealogy and are presented in partnership with *Who Do You Think You Are? Magazine*



 These sessions are part of the Who Do You Think You Are? LIVE focus on Welsh ancestry

 These sessions on Irish Ancestry are supported by Tourism Ireland.



The Society of Genealogists Regional Workshop is supported by the Federation of Family History Societies.



Workshop timetable:

Sunday 28 February

	WDYT YA? Theatre /SOG1	SOG2	SOG3	SOG REGIONAL	Ancestry.co.uk ACADEMY	DNA WORKSHOP	TheGenealogist Stand 825
9:30	9:30 SHOW OPENS						
10:00							
10:05							
10:10							
10:15							
10:20							
10:25							
10:30							
10:35							
10:40							
10:45							
10:50							
10:55							
11:00							
11:05							
11:10							
11:15							
11:20							
11:25							
11:30							
11:35							
11:40							
11:45							
11:50							
11:55							
12:00							
12:05							
12:10							
12:15							
12:20							
12:25							
12:30							
12:35							
12:40							
12:45							
12:50							
12:55							
13:00							
13:05							
13:10							
13:15							
13:20							
13:25							
13:30							
13:35							
13:40							
13:45							
13:50							
13:55							

	WDYT YA? Theatre /SOG1	SOG2	SOG3	SOG REGIONAL	Ancestry.co.uk ACADEMY	DNA WORKSHOP	TheGenealogist Stand 825
14:00							
14:05							
14:10							
14:15							
14:20							
14:25							
14:30							
14:35							
14:40							
14:45							
14:50							
14:55							
15:00							
15:05							
15:10							
15:15							
15:20							
15:25							
15:30							
15:35							
15:40							
15:45							
15:50							
15:55							
16:00							
16:05							
16:10							
16:15							
16:20							
16:25							
16:30							
16:35							
16:40							
16:45							
16:50							
16:55							
17:00	17:00 SHOW CLOSES						

TICKET = To gain entry to these free sessions, you must obtain an entrance ticket. These can be picked up free at the show, or a maximum of two per person can be purchased in advance for £2 each

Please note that no tickets are required for sessions in the Ancestry.co.uk Academy, the DNA Workshop or on TheGenealogist.co.uk stand.

= The *Who Do You Think You Are?* Theatre, SOG Workshops, Ancestry.co.uk Academy and DNA Workshops will have an induction loop for the hearing-impaired

= These sessions are signed for the hearing-impaired

L While these sessions will prove useful whatever stage you are at in your research, they are also suitable for people who are new to genealogy and are presented in partnership with *Who Do You Think You Are? Magazine*



These sessions on Irish Ancestry are supported by Tourism Ireland.



The Society of Genealogists Regional Workshop is supported by the Federation of Family History Societies.

